

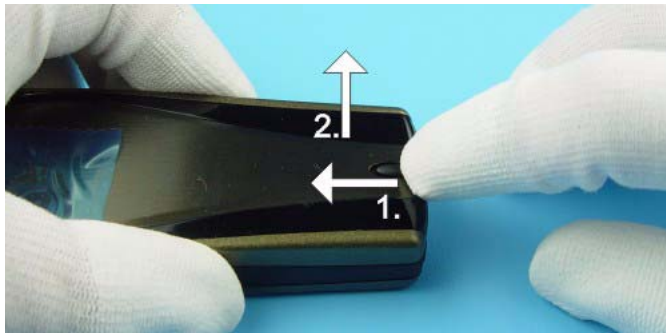
Customer Care Solutions
NHL-4J Series Transceivers

Disassembly Instructions

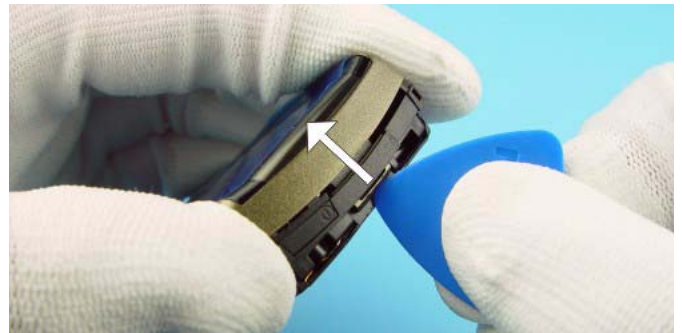
Table of Contents

	Page No
Disassembly Procedure (see also video clips)	3
Assembly Instructions for Camera Module	6

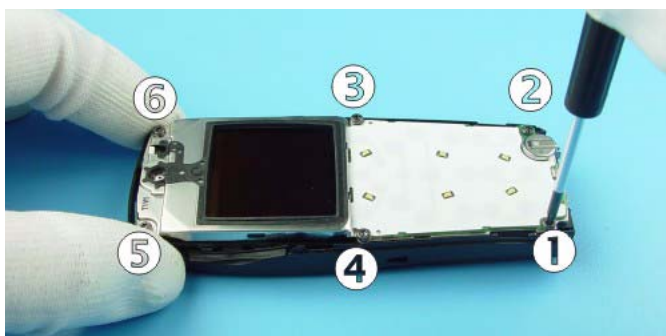
Disassembly Instructions (see also video clips)



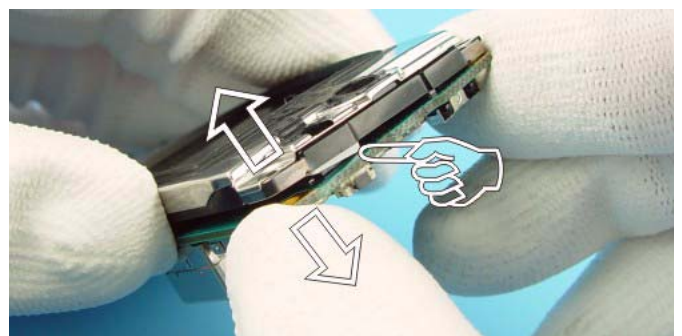
Push the Release Button to the left before pulling up the B-Cover.



Unlock the top guidance to remove the A-Cover.



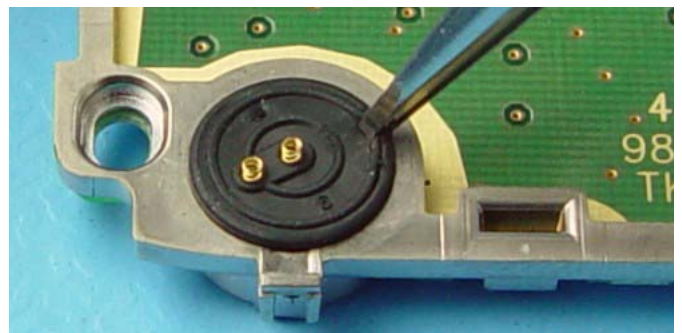
Unscrew the six TORX PLUS® size 6 screws, using the order shown. For assembly, the reverse order and a torque of 22Ncm have to be used.



Take the modules from C-Cover and unplug the display connector by pulling the modules apart carefully.



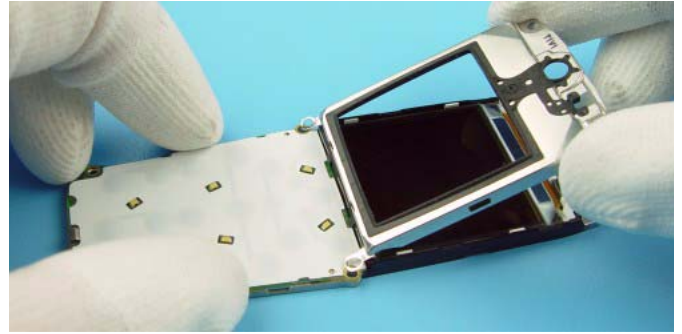
The Speaker is attached with double-sided adhesive Foam Tape. Always use a new tape when mounting the Speaker.



Do not damage the spring contacts, when removing the Microphone.



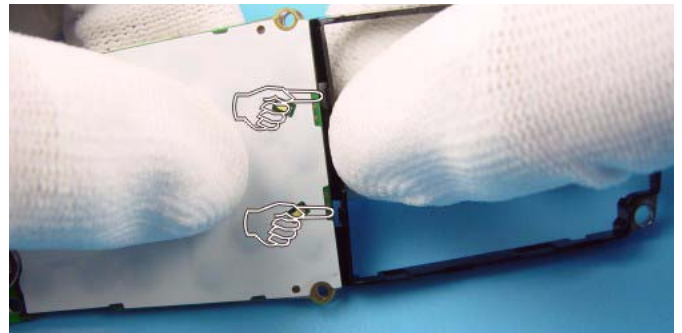
Open the snaps with SRT-6 on both sides of the Display Shield.



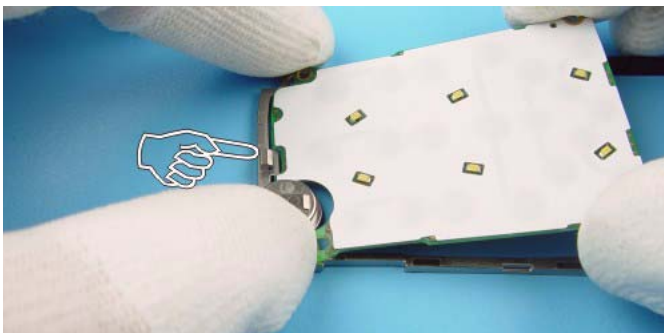
The Display Shield is attached with hooks at its bottom side.



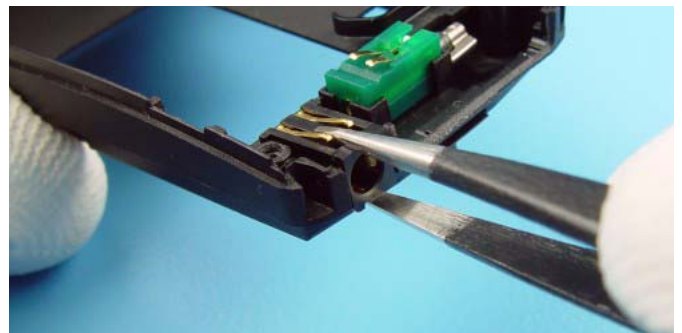
Take a clean cloth and press the LCD from the LCD Frame.



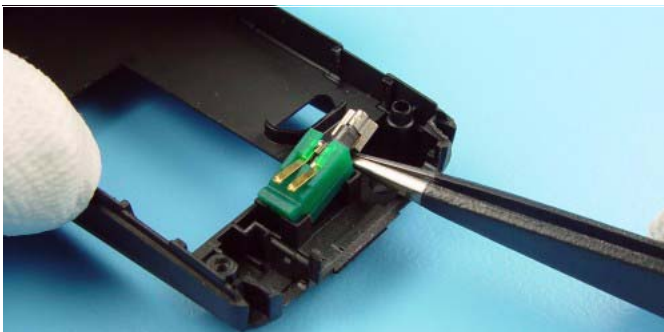
Bend the frame a bit, shift the UI Module to the right and then pull it up.



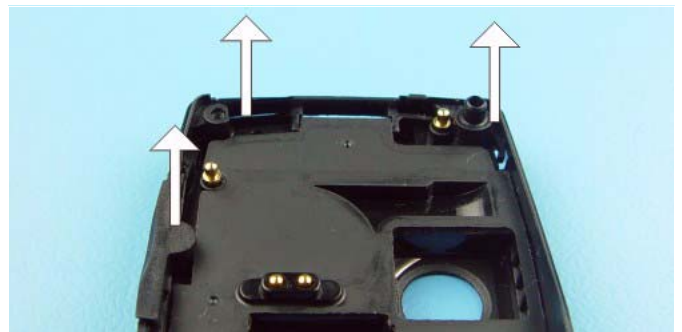
Remove UI-Module.



To remove the DC Jack, place tweezers between the spring contacts and under the jack. You'll need to use additional force to pull the jack upwards



Remove the Vibra Motor with the rubber and pull it from its guidance.



Volume Key and the Infrared Window can be easily removed.



The Power Key has to be unlocked on the lower side first.



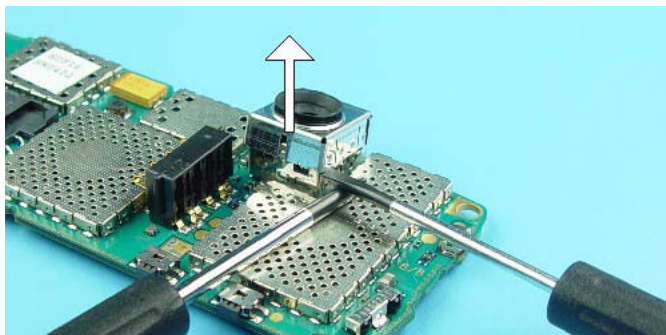
Unlock Antenna on both sides with SRT-6.



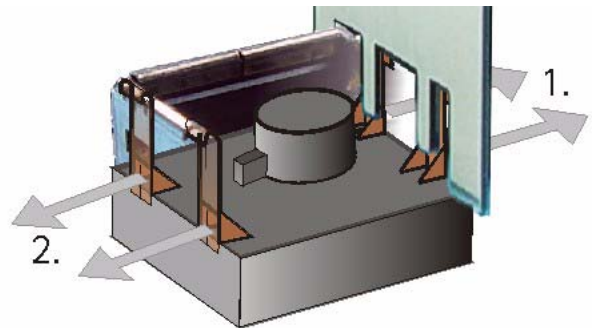
Antenna Pogo Pins can be removed by pushing with Torx driver through the C-Cover.



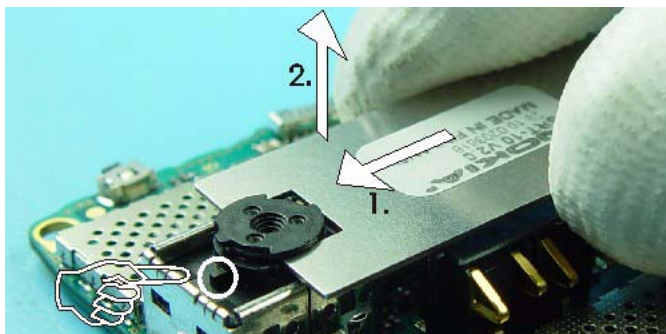
If there is a need to change the Release Button, also SRT-6 can be used.



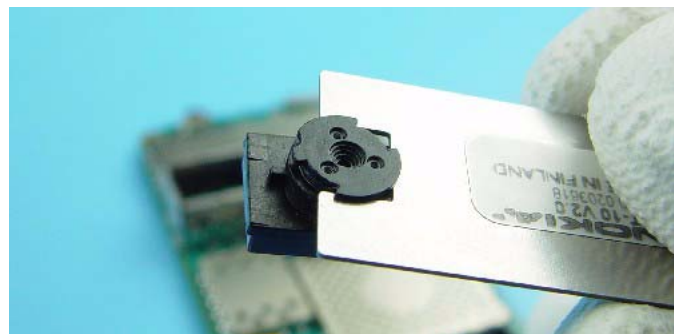
Remove Connector Shield when cleaning contacts or changing Camera Module.



Camera Module is attached with four snaps into its guidance. Place SRT-10 as shown in the picture and unlock the snaps on both sides. Note releasing order.

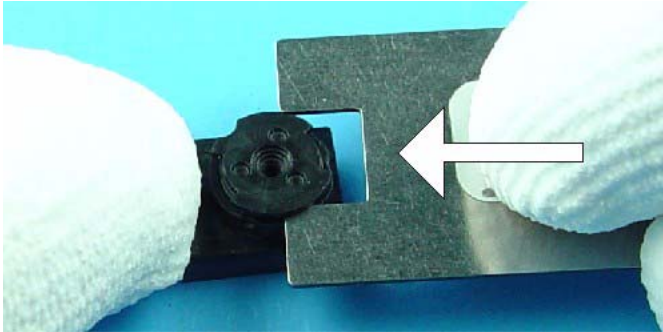


Remove Camera Module carefully. Take care that Camera marking shows to right side when assembling.

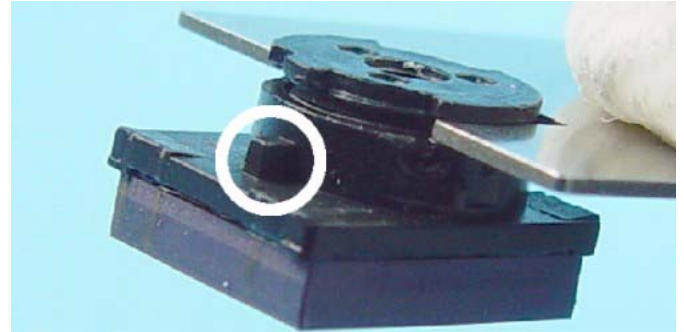


Do not touch contacts and camera lens. Use always SRT-10 for assembly and disassembly.

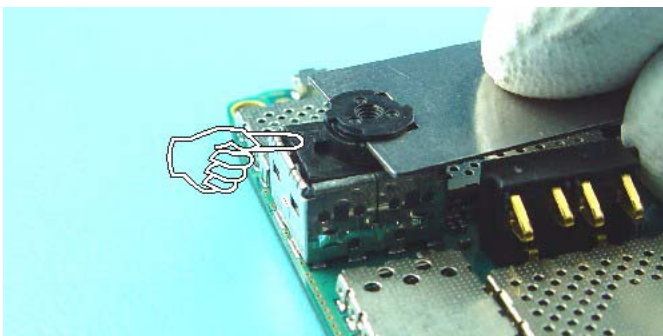
Assembly Instructions for Camera Module



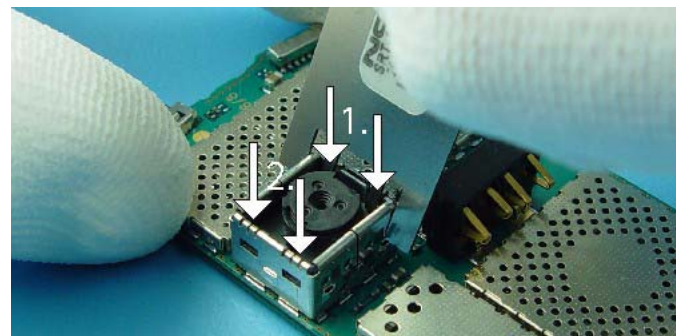
Shift the SRT-10 into the camera groove.



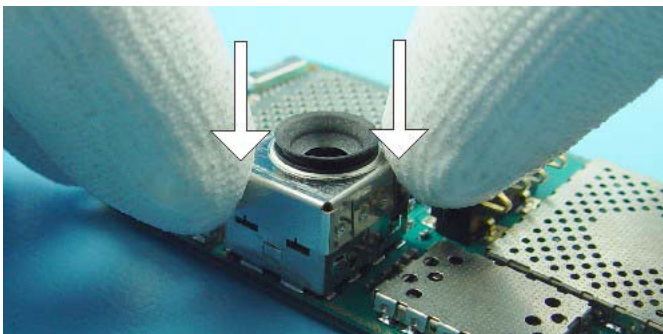
Take the Camera Module carefully and note the marking.



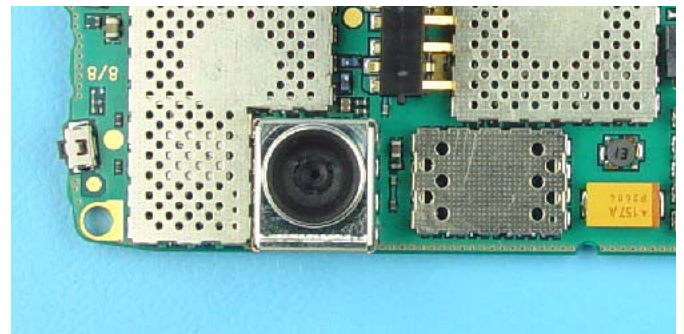
Place Camera Module into its guidance. It is very important to take correct position of the Camera Module to avoid destruction of this device.



Use SRT-10 to lock Camera Module into its guidance. Note locking order.



Put the Connector Shield on the camera guidance and press it down.



Check, that Camera Module is clean. When it is necessary to clean the Camera lens, use compressed air for this procedure only.